

A copy of this plan is filed in the Land Titles Office for MANAWATU, ONT.

CANADA LAND SURVEY RECORDS
DATE _____

**PLAN AND FIELD NOTES OF SURVEY OF
LOTS 11 TO 22, BOTH INCLUSIVE AND
R109 and R110**

COMPRISING OF PART OF BLOCK 3, GROUP 1084,
PLAN 71535 CLSR, 1986 LTO
Iqaluit, Nunavut
SCALE 1:500



The field notes that will provide true scale and optimum readability for this plan is kept by 60971.

THIS SURVEY WAS EXECUTED DURING THE PERIOD OF JUNE 24, 2016 TO JULY 04, 2016 BY D. S. URSO, C.L.S., #1093.

LEGEND:

- BEARINGS ARE UTM GRID DETERMINED FROM THE BEARING BETWEEN CORNER A 1986002 BOUND 3107217° AND ARE REFERRED TO THE CENTRAL MERIDIAN OF ZONE 19 WEST.
- DISTANCES ARE HORIZONTAL AT GENERAL GROUND LEVEL AND ARE EXPRESSED IN METRES.
- CLS 77 STAKED POST FOUND
- OSP CONTROL MONUMENT
- CLS 77 STAKED POST PLACED
- LAND DEALT WITH BY THIS PLAN BOUNDED THIS
- THIS SHOWS THIS
- THE PLAN SHOWS THE HORIZONTAL GROUND LEVEL DISTANCES IN METRES TO CORNER AND DISTANCES HORIZONTAL GROUND LEVEL DISTANCES BY THE INVERSE CORNER SCALE FACTOR OF 0.999964.
- ALL MONUMENTS PLACED DURING THIS SURVEY ARE MARKED WITH LOT NUMBERS AND THE YEAR OF SURVEY PLUS "P" FOR ROAD WHERE APPLICABLE.
- THE STAKES FOR FOUND NO EVIDENCE.
- OSP STANDS FOR FOUND EVIDENCE DISTURBED BY ROAD CONSTRUCTION
- CLS STANDS FOR MARKED

CURVE DATA

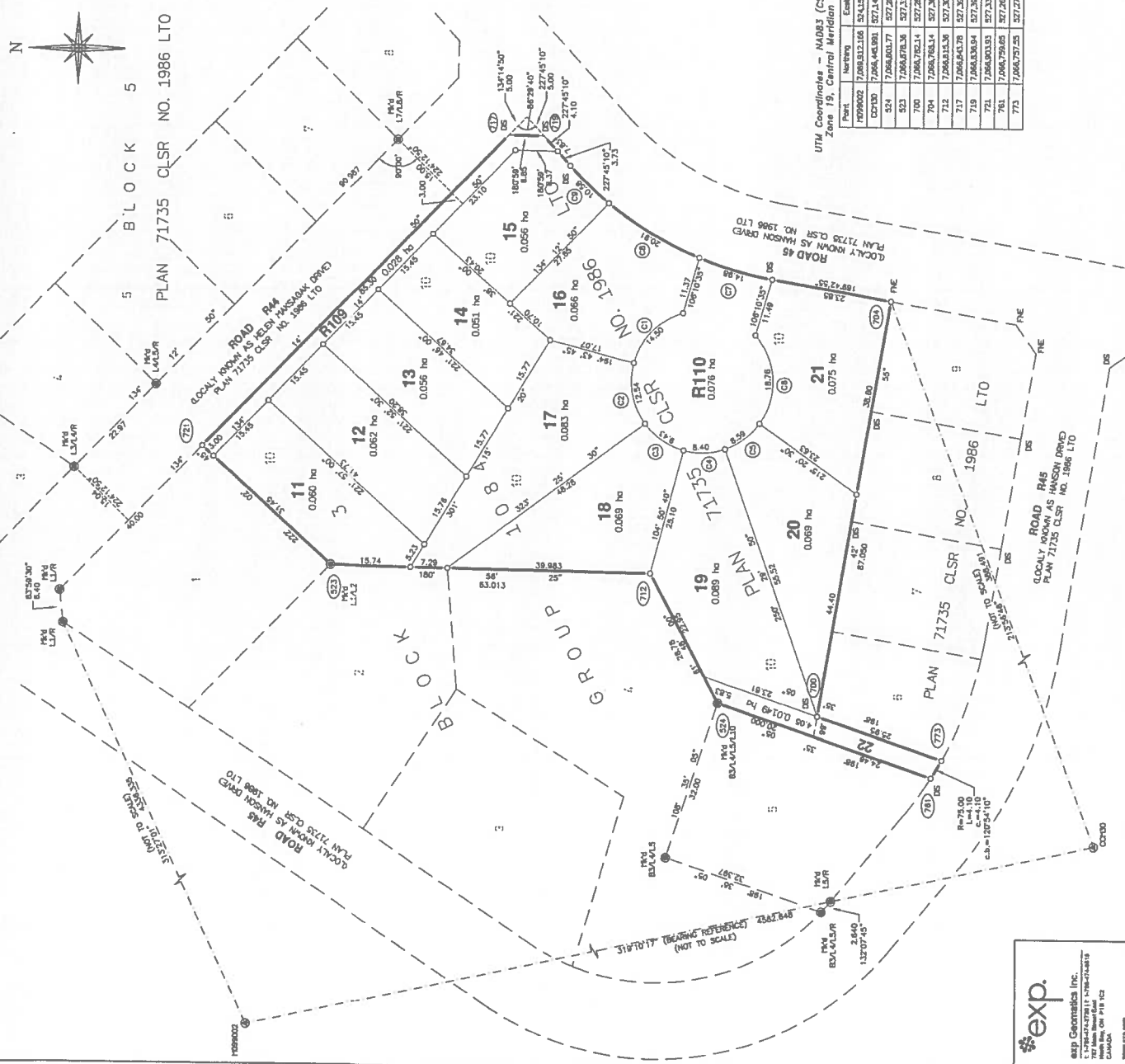
Curve	Lot	Radius	Length	Chord	Chord bearing
(1)	15	14.00	14.00	13.96	314°22'30"
(2)	17	14.00	12.54	12.13	79°03'30"
(3)	18	14.00	9.43	9.25	3°49'00"
(4)	19	14.00	8.40	8.27	357°47'15"
(5)	20	14.00	8.59	8.46	322°52'00"
(6)	21	14.00	18.78	17.29	86°28'30"
(7)	23	70.00	14.98	14.96	15°49'30"
(8)	16	70.00	20.61	20.63	307°31'00"
(9)	15	70.00	10.36	10.57	67°24'15"



RE: Section 38, Canada Land Survey Regulations
CERTIFIED CORRECT
On this 24th day of July 2016
DAVE S. URSO C.L.S.

Department of Natural Resources
REGISTRATION DIVISION
REGISTERED SURVEYOR
MANAGER, CADASTRAL SERVICES, WEST/NORTH
Surveyor General Branch

PROJECT No. 201620015
FILE No. Apex Infill
ALS - CHECKLIST No.



exp.
Geo Geomatics Inc.
1-800-441-2771
777 Main Street East
LONDON, ON N1P 1T3
www.exp.ca

