

ጋዲ ሊርሌናረኛ ጋዲ ገጽ ስርዓተ-ግብርና ጋዲ ጋዲ 22 ርዕይ ገጽ ፳፭፣ 2016.

፲ርር ሲገባኝ
ገጽ

ገጽ ገጽ
ገጽ ገጽ ገጽ

ጋዲ ሊርሌናረኛ ጋዲ ገጽ ገጽ ጋዲ ጋዲ 22 ርዕይ ገጽ ፳፭፣ 2016.

፲ርር ሲገባኝ
ገጽ

ገጽ ገጽ
ገጽ ገጽ ገጽ

ጋዲ ሊርሌናረኛ ጋዲ ገጽ ገጽ ገጽ ገጽ ገጽ ገጽ ገጽ ገጽ 13 ርዕይ ገጽ ፳፭፣ 2016.

፲ርር ሲገባኝ
ገጽ

ገጽ ገጽ
ገጽ ገጽ ገጽ

Δርጊት “A”

መጠኑ ካክልሎታል ለርዕይታል #823

ጠቅላይ ልማት ሚኒስቴር ጋራ ልማት B

ጠቅላይ ልማት ሚኒስቴር ጋራ ልማት, ጋራ ልማት ሚኒስቴር ጋራ ልማት 22, 2016:

- ጠቅላይ ልማት 11 ለርጊት ልማት 3, ጠቅላይ ልማት 1084, ጠቅላይ ልማት 1986, ጠቅላይ ልማት ልማት
- ጠቅላይ ልማት 12 ለርጊት ልማት 3, ጠቅላይ ልማት 1084, ጠቅላይ ልማት 1986, ጠቅላይ ልማት ልማት
- ጠቅላይ ልማት 13 ለርጊት ልማት 3, ጠቅላይ ልማት 1084, ጠቅላይ ልማት 1986, ጠቅላይ ልማት ልማት
- ጠቅላይ ልማት 15 ለርጊት ልማት 3, ጠቅላይ ልማት 1084, ጠቅላይ ልማት 1986, ጠቅላይ ልማት ልማት
- ጠቅላይ ልማት 16 ለርጊት ልማት 3, ጠቅላይ ልማት 1084, ጠቅላይ ልማት 1986, ጠቅላይ ልማት ልማት
- ጠቅላይ ልማት 17 ለርጊት ልማት 3, ጠቅላይ ልማት 1084, ጠቅላይ ልማት 1986, ጠቅላይ ልማት ልማት
- ጠቅላይ ልማት 18 ለርጊት ልማት 3, ጠቅላይ ልማት 1084, ጠቅላይ ልማት 1986, ጠቅላይ ልማት ልማት
- ጠቅላይ ልማት 19 ለርጊት ልማት 3, ጠቅላይ ልማት 1084, ጠቅላይ ልማት 1986, ጠቅላይ ልማት ልማት
- ጠቅላይ ልማት 20 ለርጊት ልማት 3, ጠቅላይ ልማት 1084, ጠቅላይ ልማት 1986, ጠቅላይ ልማት ልማት
- ጠቅላይ ልማት 21 ለርጊት ልማት 3, ጠቅላይ ልማት 1084, ጠቅላይ ልማት 1986, ጠቅላይ ልማት ልማት

A copy of this plan is filed in the Land Titles Office for MANITOBA, on _____

CANADA LANDS SURVEYS RECORDS

DATE _____

PLAN AND FIELD NOTES OF SURVEY OF
**LOTS 11 TO 22, BOTH INCLUSIVE AND
 R109 and R110**
 COMPRISING OF PART OF BLOCK 3, GROUP 1084,
 PLAN 71535 CLSR, 1986 LTO

locut, Manitoba
 SCALE 1:500



The plot area that will provide true scale and optimum readability for this plan is shown by dotted.

THIS SURVEY WAS EXECUTED DURING THE PERIOD OF _____ JUNE 24, 2016 TO _____ JULY 04, 2016 BY _____ D. S. LIND, C.L.S., 11093

LEGEND:

BEARINGS ARE LISTED DETERMINED FROM THE BEARING BETWEEN CORNER 4 AND CORNER 5 AND ARE REFERRED TO THE CENTRAL MERIDIAN OF ZONE 19 08T WEST.

DISTANCES ARE HORIZONTAL AT GENERAL GROUND LEVEL AND ARE EXPRESSED IN METRES.

CLS 77 STANDARD POST FOUND _____

OSP CONTROL POINT FOUND _____

CLS 77 STANDARD POST PLACED _____

LAND DEALT WITH BY THIS PLAN BOUNDED THIS _____

TES SHOWN THIS _____

THIS PLAN SHOWS THE HORIZONTAL GROUND LEVEL DISTANCES IN METRES TO CONFORM WITH THE HORIZONTAL DISTANCES IN THE ORIGINAL SURVEY RECORDS OF 1986.

ALL POINTS PLACED DURING THIS SURVEY ARE MARKED WITH LOT NUMBERS AND THE YEAR OF SURVEY PLUS "M" FOR ROAD WHERE APPLICABLE.

ALL POINTS ARE ACCOMPANIED BY A METAL POST AND FLAG.

THE STANDS FOR FOUND NO EVIDENCE.

DS STANDS FOR FOUND EVIDENCE DISTURBED BY ROAD CONSTRUCTION.

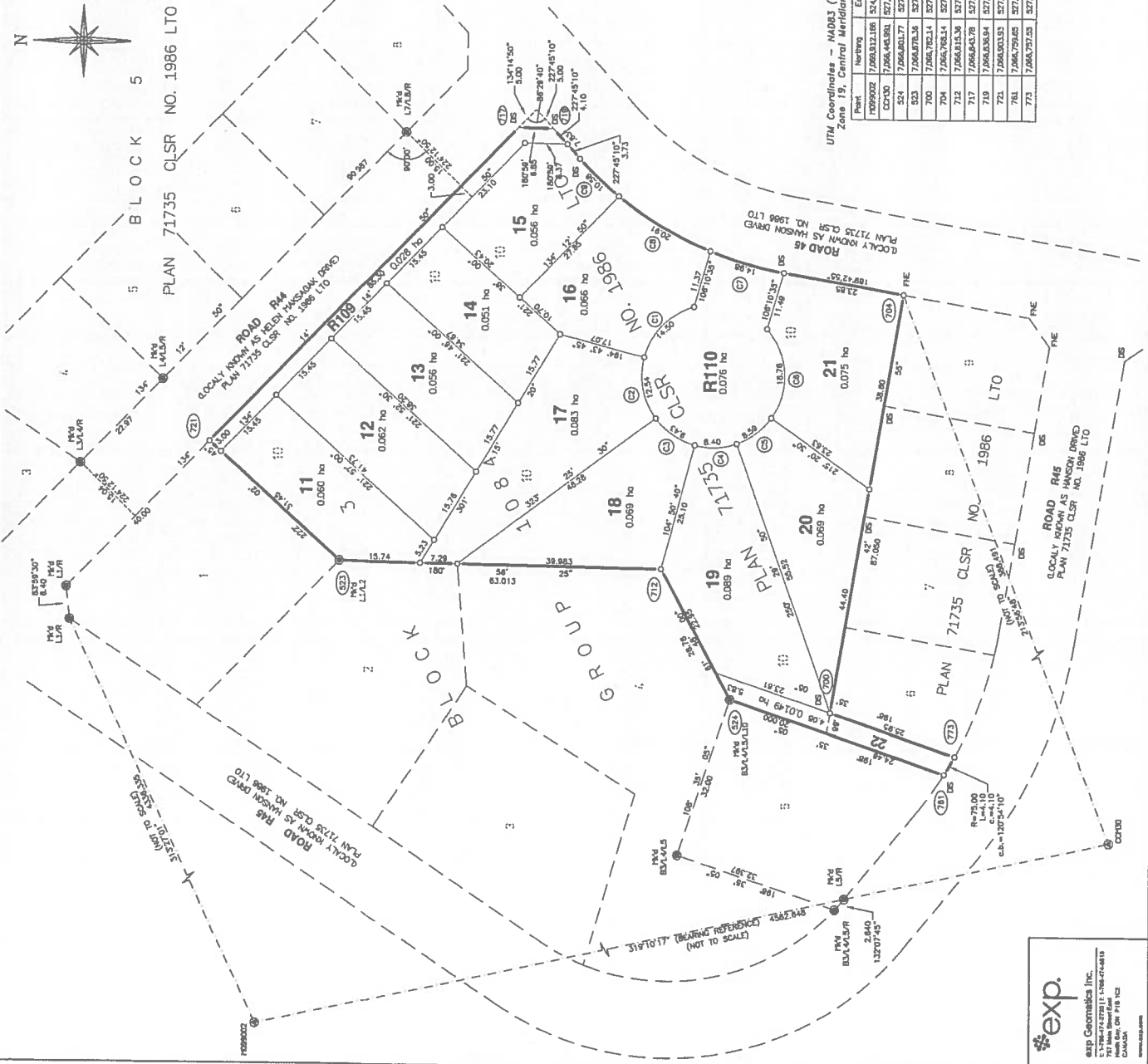
MFD STANDS FOR MARKED.

CURVE DATA

Curve	Lot	Radius	Length	Chord	Chord bearing
(C1)	15	14.00	14.50	13.86	314°22'23"
(C2)	17	14.00	12.54	12.13	79°04'35"
(C3)	18	14.00	9.43	8.25	34°08'05"
(C4)	19	14.00	8.40	8.27	357°47'15"
(C5)	20	14.00	6.59	6.46	327°52'07"
(C6)	21	14.00	10.76	17.29	86°56'35"
(C7)	23	70.00	24.08	14.08	15°49'30"
(C8)	15	70.00	20.81	20.83	307°11'00"
(C9)	15	70.00	10.58	10.57	47°24'15"

UTM Coordinates - NAD83 (CSRS 2010.0)
 Zone 19, Central Meridian 89° west

Point	Northing	Easting
H099002	7,069,812.106	52,433,414.414
C2710	7,066,468.981	52,714,863.353
S24	7,066,640.177	52,720,331.019
S23	7,066,670.338	52,720,310.919
700	7,066,792.114	52,726,161.010
704	7,066,792.114	52,736,321.010
712	7,066,641.776	52,736,309.010
719	7,066,641.776	52,736,309.010
721	7,066,641.776	52,736,309.010
761	7,066,792.114	52,726,161.010
773	7,066,792.114	52,726,161.010



REG. Section 36, Canada Lands Surveys Regulations
 CERTIFIED CORRECT
 On the 24th day of August 2016
 DAVE S. LIND, C.L.S.
 Department of Natural Resources
 REG. Section 25, Canada Lands Surveys Act
 CONFIRMED
 MANITOBA
 MANAGER, CADASTRAL SERVICES, WEST/AR/RT/H
 Surveyor General Branch

exp. Geomatics Inc.
 721 Main Street East
 Winnipeg, MB R2P 1K2
 Canada
 www.exp-geo.com

