

THE CORPORATION OF THE CITY OF IQALUIT
BY-LAW No. 857
AMENDMENT TO THE GENERAL PLAN, BY-LAW # 703

A By-law of the City of Iqaluit in Nunavut to amend By-law No. 703, The City of Iqaluit General Plan, pursuant to the Planning Act, R. S. N. (1988), c. P-7, s. 29

WHEREAS the Council of the Corporation of the City of Iqaluit has adopted a General Plan (By-law No. 703), in accordance with the *Planning Act*,

WHEREAS Council wishes to amend the General Plan to remove the prohibition on the use of metal siding in the Core Area, and

WHEREAS Council wishes to amend Annex 'B' of the General Plan, being the Inuit Owned Lands Parcel 'E' Development Scheme, to re-designate a portion of lands from "Open Space" to "Commercial",

NOW THEREFORE the Council of the City of Iqaluit enacts as follows:

1. That Subsection 5.1.3.2 of the General Plan is hereby amended with the addition of the following located at the end of the first sentence:

"This provision shall not apply to lands subject to the IOL Parcel 'E' Development Scheme."
2. Schedule A of this By-law is declared to form part of General Plan By-law No. 703.
3. The portion of Lot 1, Block 205, Plan 2997 as shown on Schedule A of this By-law is hereby re-designated from *Open Space* to *Commercial*.
4. This by-law shall come into effect on the date of its third reading.

READ a first time this 22 day of May, 2018.

Madeleine Redfern
Mayor

A/Chief Administrative Officer

After due notice and a Public Hearing held on June 26, 2018.

READ a second time this 26 day of June, 2018.

Madeleine Redfern
Mayor

A/Chief Administrative Officer

APPROVED by the Minister of Community and Government Services this 30 day of November, 2018.

Minister, Community and Government Services

READ a third and final time this 23 day of April, 2019.

Romeyn Stevenson
Deputy Mayor

Chief Administrative Officer

SCHEDULE A

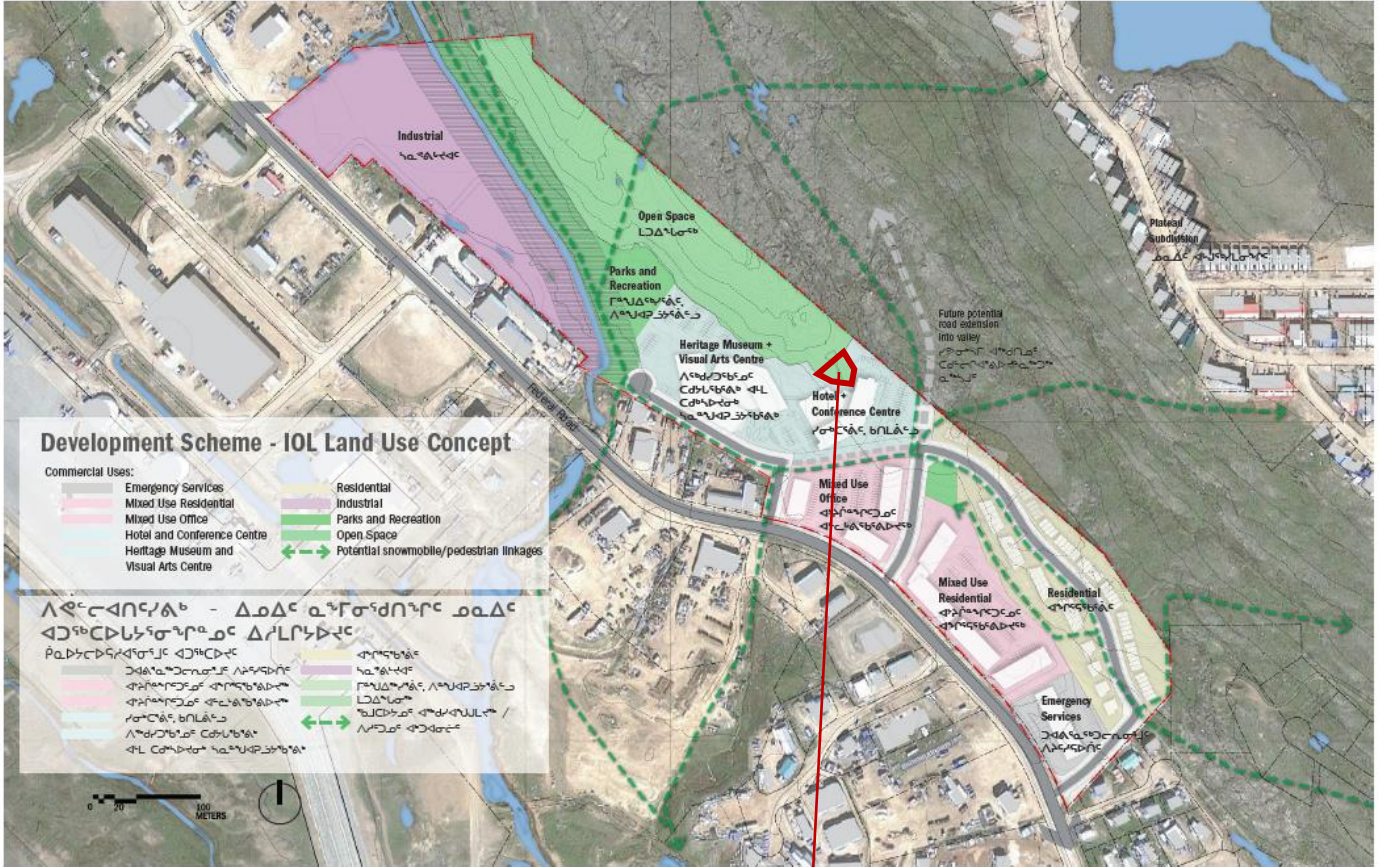


Figure 8: Development Scheme for IOL Parcel E.

Lands to be re-designated from “Open Space” to “Commercial” in the Inuit Owned Lands Parcel ‘E’ Development Scheme (Annex B of the General Plan)