



Project
Leaders



Project: 2022-RFQ-137 720069 – Arnaitok Arena Improvements			
Addendum No.	1	No. of Pages:	3
Date:	July 26, 2022	Doc. No.:	P7201-1662260184-17(1.0)

The following change(s) in the Request for Quotation Documents are effective immediately.
This Addendum forms part of the Contract Documents.

09 65 00 – Resilient Flooring

MaxMat+ rubber flooring per the appended technical data sheet is an acceptable alternative for the alternate flooring.

DURABILITY FOR EXTREME ENVIRONMENTS

MaxMat+ rubber floor covering is tough, long lasting, slip-resistant, and easy care. The wear resistance of rubber is incredible and can withstand equipment on a daily basis without rips or tears.

Multiple colour options are offered. MaxMat+ is available in the Classic Series (100% black) and Elite Series (a choice of four speckled colours).

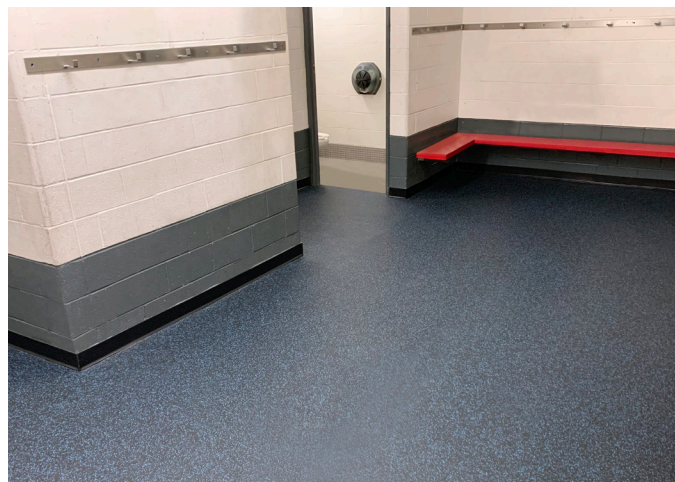
Easy to create a design that corresponds to functional, visual and financial requirements.

IDEAL APPLICATION

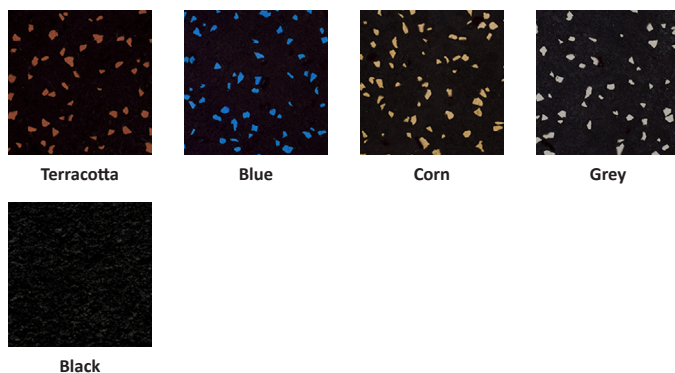
Fitness, Arena (skate surface)

FEATURES & BENEFITS

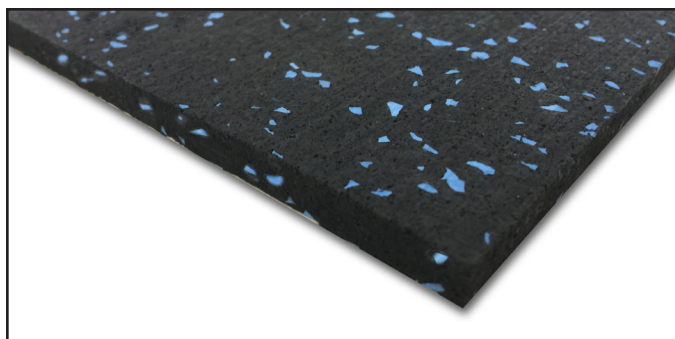
- Offered in the form of rolls, standard tiles, and interlock tiles
- 100% recycled rubber
- Resilient, resistant and durable
- Anti-slip surface
- Shock absorption and sound insulation
- Easy maintenance due to its non-porous surface
- Designed to resist wear, free weights and skates
- Can be installed on the existing floor and protects that surface as well
- Coloured granules dispersed throughout the product thickness
- Large range of colours to complement other surfaces



COLOUR SELECTION



Note: On-screen and printer colour representations may vary from actual colours.



MAXMAT+

R-SERIES ■ T-SERIES ■ I-SERIES

DESCRIPTION	MAXMAT+ R-SERIES (ROLLS)	MAXMAT+ T-SERIES (TILES)	MAXMAT+ I-SERIES (INTERLOCK)
Material	Recycled rubber	Recycled rubber	Recycled rubber
EPDM granules	10%	10%	10%
Length	25' (7.62 m)	6' (1.83 m)	23 1/8" (inside to border)
Width	4' (1.22 m)	4' (1.22 m)	23 1/8" (inside to border)
Thickness	0.375" (10 mm) Other thicknesses available on request	0.375" (10 mm)	0.375" (10 mm)
Weight	222 lb/roll (100.7 kg)	54 lb/tile (24.5 kg)	6.4 lb/tile (2.90 kg)
Surface area	100 ft ² (8.19 m ²)	24 ft ² (2.23 m ²)	3.7 ft ² (0.34 m ²)

TECHNICAL CHARACTERISTICS	STANDARD	VALUE
System category	N/A	Point-elastic
Hardness shore A	ASTM D2240	70 ± 5
Compression set	ASTM D395	-15% - 45% à 25%
Taber abrasion	ASTM C501	0.45
Tensile strength	ASTM D412	>300 psi
Elongation at break	ASTM D412	>90%
Coefficient of friction	ASTM C1894-95	Wet: 1.20 / Dry: 1.20
Density	ASTM D729	>65 lb/ft ³
Critical radiant flux	ASTM D395	Class I/II*
Reaction to fire	CAN/ULC-S102.2	160
Flame spread	ASTM E84	135**
Smoke density	ASTM E84	<450**
Tear resistance	ASTM D624	5.71 lbf/in
Chemical resistance	ASTM F925-02	No change
Warranty (manufacturing or material defects)	N/A	5 years

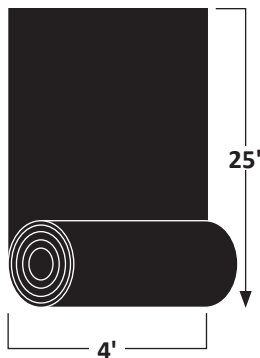
Note: Technical information is subject to change without notice.

The data is for information purposes only. For more detail, please contact us.

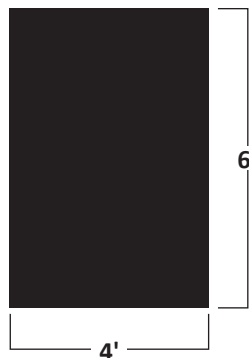
*Class I available upon request.

** Same as carpet and wood.

**MAXMAT+ R-SERIES
(ROLLS)**



**MAXMAT+ T-SERIES
(TILES)**



**MAXMAT+ I-SERIES
(INTERLOCK)**

